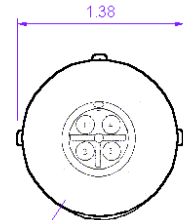
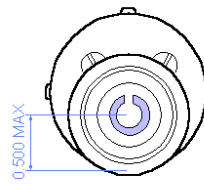
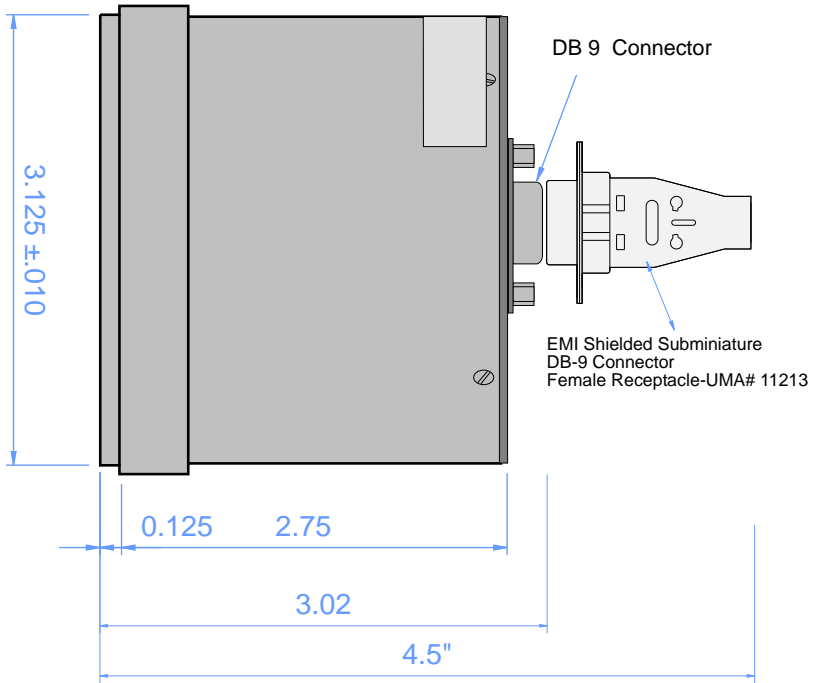
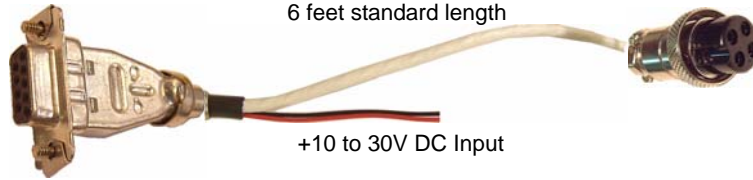


- 1 Voltage In
- 2 Voltage In
- 3 Voltage Out to Sender
- 4
- 5 Signal In
- 6 Internal Lighting (EL)
- 7 Internal Lighting (EL)
- 8 Ground
- 9 Ground

Ground (Black wire)	Pin 2
+12 V Regulated from Tach (Red wire)	Pin 1
TSU Output (White wire)	Pin 3



4 PIN MIC CONN.

